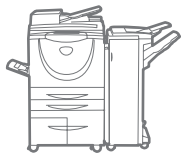


WorkCentre®
5030 / 5050
Tabloid-size
Black-and-white
Multifunction Device



Xerox® WorkCentre®
5030 / 5050
Multifunction Device
Solid performance,
exceptional value



WorkCentre® 5030 / 5050 Multifunction Device

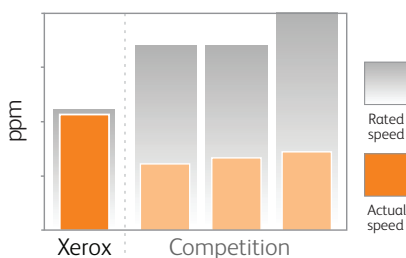
These powerful, flexible multifunction devices offer the essential capabilities that your office is looking for. Start simply with full-featured copying, and then add printing, scanning, faxing and finishing. Thanks to an unbelievably low price, you'll be working smarter while staying within your budget.

Productivity moves into high gear

The high-performance WorkCentre 5030/5050 multifunction devices can easily manage all the demands of any office or workgroup.

- **Faster printing in the real world.** Print speeds as fast as 50 ppm (WorkCentre 5050) and 30 ppm (WorkCentre 5030). Networking efficiencies plus the advanced controller design delivers effective print speeds that outperform competitors' higher-speed-rated devices.
- **First page out as fast as 3.4 seconds,** ensuring that no one waits for documents.
- **Fast scanning,** as fast as 55 images per minute (WorkCentre 5050) or 35 images per minute (WorkCentre 5030).
- **Load paper less frequently,** with 4,800-sheet paper capacity standard on the WorkCentre 5030/5050.
- **Great media handling,** from light papers to heavy stock, from any tray.

Print Efficiency



In real-world network printing, WorkCentre devices outperform the competition.

Features made easy

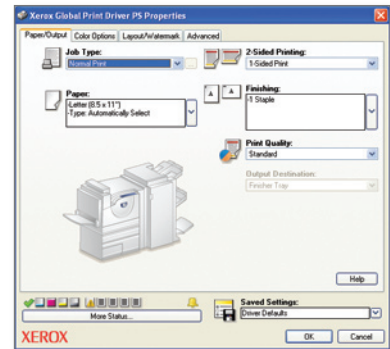
The WorkCentre 5030/5050 devices combine essential copying functions with top performance and professional quality output. Fully expandable, these devices let you pick exactly the options you need for your busy office.

- **Automatically route scanned files** to any authenticated user's "home" directory using the Scan to Home feature.
- **Store documents on the device** with our Store, Print and Reprint Saved Job feature. It provides easy access to frequently reprinted jobs such as forms and print-on-demand brochures.
- **Turn scanned files into web-optimized PDFs** so users can view them without waiting for the entire file to download. (Scan to Linearized PDF feature)
- **Send and receive faxes via email** with the Internet Fax feature via SMTP.
- **Professional-quality output, patented AutoIQ** feature monitors and adjusts print settings for optimum output quality.
- **Handles a wide variety of print formats,** from PCL® 5e and 6 and PostScript® 3 emulations to Unicode printing.
- **Easy to use touchscreen controls** give you fast access to basic and advanced features.

Engineered to save you money and time

The WorkCentre 5030/5050 device's IT friendly features not only streamline document production, they also simplify device management, freeing your IT staff for more important work.

- **Reduce IT support costs** by consolidating multiple output devices into a single multifunction unit; IT has fewer devices to manage and, since users operate the same easy interface for multiple functions, fewer help desk calls.
- **Smart Kit™ technology** reduces the frequency and duration of service calls by making it easy to replace components.
- **Finishing options** such as multi-position stapling and optional 2- or 3-hole punching let you bring small print jobs in-house.
- **Check print status remotely** via the bidirectional print driver and over the web, or view and manage print jobs right from the touch screen.
- **Track usage and reduce costs.** Set user access and usage limits, and generate usage reports for greater cost control.
- **Seamless administration** with CentreWare Internet Services internal web server. It simplifies installation, cloning and network administration. You get quick access to device and job status, and automatic email alerts when device attention is needed, such as low toner levels.
- **Efficient scan to email** lets you quickly distribute files to multiple addresses and also integrates your network address book with LDAP capability.



Simplify printer management.

The Xerox Global Print Driver significantly reduces IT involvement and eliminates the need to download individual printer drivers for each product. This truly universal printer driver lets users print to virtually any printer or multifunction printer—even to those made by other manufacturers.

- 1** 75-sheet Duplex Automatic Document Feeder quickly processes single- or double-sided originals
- 2** Two 550-sheet universal-size trays hold paper sizes up to 11 x 17 in./A3
- 3** 100-sheet Bypass tray
- 4** High-Capacity Feeder Tray: 3,600 sheets total capacity
- 5** Office Finisher: Multi-position stapling, automatic collation, optional 2- or 3-hole punch
- 6** Scanner option and Scan to Home lets you store a scanned document in your home directory
- 7** Optional Fax includes embedded, Internet and Network Server Fax
- 8** An easy-to-use touch screen control panel provides convenient access to advanced capabilities



Better security

Safeguard your electronic data with improved protection for data, device and network. Enjoy the peace of mind that comes from knowing your private information will stay that way.

- **Scheduled Image Overwrite** automatically overwrites selected documents on the device hard drive at a scheduled times, letting you maintain security without intruding on worktime.
- **IP Filtering** prevents unauthorized users or networks from accessing the device.
- **IPv6** offers flexible and secure transaction of your print, scan, store and reprint jobs as well as supports software updates and device configuration.
- **Supports the Common Access Card (CAC) system**, the U.S. Department of Defense Smart Card technology, which protects against unauthorized access.
- **Full System Common Criteria (ISO 15408)** certified version available.

WorkCentre® 5030 / 5050 Quick Facts

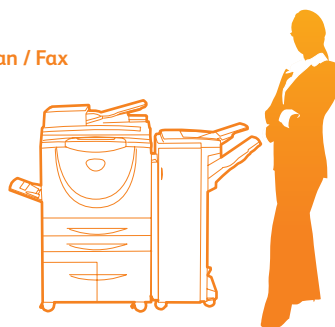
- Copy up to 30 / 50 ppm
- Scan and print up to 35 / 55 ppm
- Powerful scan features: scan to home and scan to email
- Walkup and Internet Fax
- Maximum paper capacity: 4,800 sheets
- Ethernet 10/100/BaseT

Copy / Print / Scan / Fax

11 x 17 in.

30 / 50 ppm

WxDxH:
58.7 x 28.3 x 43.9 in.
1,490 x 720 x 1,115 mm



WorkCentre® 5030 / 5050

Multifunction Devices



	WorkCentre® 5030	WorkCentre® 5050
Speed	30 pages per minute (ppm)	50 pages per minute (ppm)
Duty Cycle	Up to 125,000 pages / month	Up to 200,000 pages / month
Device memory	128 MB EPC RAM Standard / 512 MB EPC RAM Maximum, 128 MB Network Controller and 32 MB Fax	
Output resolution	600 x 600 dpi x 8 bit	
Paper Handling		
Paper input	Standard	
	Duplex Automatic Document Feeder: 75 sheets; Size: Custom sizes from 5.5 x 8.5 in. / A5 to 11 x 17 in. / A3 Trays 1 – 2: 550 sheets each; Size: Custom sizes from 5.5 x 8.5 in. / A5 to 11 x 17 in. / A3 Bypass Tray: 100 sheets; Custom sizes from 4.13 x 5.83 in. / 105 – 148 mm to 11 x 17 in. / A3 High-Capacity Feeder: Tray 3: 1,600 sheets; Size: 8.5 x 11 in. / A4 Tray 4: 2,000 sheets; Size: 8.5 x 11 in. / A4	
Paper output	Standard	
	Offsetting Catch Tray: 300 Sheets	
Finishing	Optional	
	Office Finisher: 250-sheet top tray, 2,000-sheet stacking tray, multiposition stapling, optional 2 / 3 hole punching	
Accounting	Internal Audition, Additional Job-Based Accounting Options available	
Copy		
First-page-out-time	4.7 seconds	3.4 seconds
Copy features	Build Job, AutoIQ image quality control, auto covers insertion, auto page insertions from up to two trays, multi-up copies, negative image, reverse image, image shift, auto center, auto reduction/enlargement, auto paper selection	
Print (Optional)		
Processor / PDL support	433 MHz Intel® Celeron®, 9.1 GB Hard Disk / PCL® 5e, PCL® 6, PostScript® 3 emulation with PCL/PS switching	
Connectivity	Ethernet 10/100/BaseT, 10Base2, 10Base5 via adapter	
OS support	Windows® 4.0/2000/XP®/Vista, Novell® NetWare® 4.x/5.x/6, Solaris® 2.5.1/2.6+, HP-UX® 10.2/11, IBM AIX® 4.2+, Linux® Intel® (various), Mac® OS 8.x, 9.x, OS X	
Print features	Concurrent scan-while-print, send-once/RIP-once/print-many technology, RIP-while-print multitasking, print drivers with custom graphical user interface, paper selection from the driver by type, embedded Web server for remote control/monitor/set-up, Unicode printing, job monitoring and control at the device and at the desktop, Store Print and Reprint Saved Jobs	
Scan (Optional)		
Scan speed	35 spm	55 spm
Scan destinations	Network Scanning, Scan to Email; Scan to Home; Optional: Scan to PC Desktop, SMARTsend, SMARTsend Professional	
Fax (Optional)	Embedded Fax (33.6 kbps, one-line), Internet Fax, Network Server Fax	
Other Options	Xerox Copier Assistant™ Software Foreign Device Interface*, Copy Pre-collation RAM Upgrade (256 MB), Envelope Insert Kit, 50-sheet Convenience Stapler, Job-Based Accounting Enablement, Xerox Unicode International Printing, Common Access Card enablement	
Security	Device access password protection, service diagnostic port restrictions, secure print, secure embedded fax modem, network authentication, Scheduled Image Overwrite, IP filtering, IPv6	

* Available in U.S. only

Supporting our environment

To support our environmental initiatives, we may use remanufactured components to build your multifunction system. Our process ensures flawless quality and operation, with full inspection to create a factory-produced new device.



For more information, call **1-800-ASK-XEROX** or visit us at www.xerox.com/office

