

Every business needs the power of bizhub.



**Digital Printer/Copier/Scanner/Fax Series.** There's no such thing as business as usual. Needs keep changing. Workload keeps growing. You need speed, power and productivity to keep ahead – from a central document resource that's scalable, networkable and affordable. That's why you need bizhub™.



bizhub 350/250/200 series proudly joins the bizhub family – named 2005 Product Line of the Year by Buyers Laboratory Inc.



The essentials of imaging



### Bring documents into your system faster.

A Konica Minolta bizhub device can put you at the power center of your business: the place where everything happens. Where hard-copy documents enter your workflow faster. Where you Scan-to-FTP, URL or HDD in PDF or TIFF formats. Where Scan-to-SMB (Scan-to-Desktop) lets you store files conveniently on desktop PCs – and Scan-to-Email lets you send scanned documents directly to Email addresses. Where you can access Email addresses from LDAP-compliant servers. Where Internet Fax and Network Fxing allow you to fax documents over the Internet or fax documents from your desktop. And where you'll have support for Microsoft Active Directory and NTLM User Authentication, to verify a user's network name and password before network scanning is permitted.

## Pick the bizhub solution that's a perfect fit.

Say goodbye to stand-alone copiers, redundant printers, and overstressed fax machines. With bizhub 350/250/200 Series, you can do it all – and choose from high-speed 35 ppm, productive 25 ppm, or cost-effective 20 ppm output. All with built-in print control and scanning. Plus a fax option if you need it – for a perfect fit to your growing workflow.

#### It all happens at a central bizhub.

From a central document resource, you'll have fast document input, secure log-in, flexible distribution, and powerful in-house printing and finishing.

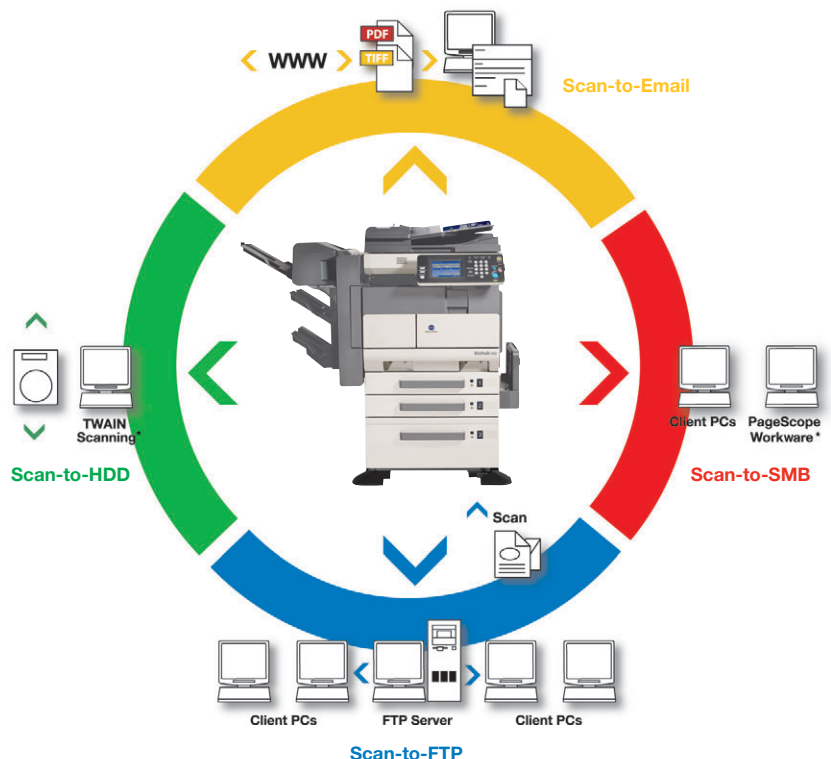
**Scan:** Bring hard-copy documents into your digital workflow to store, share, annotate and collaborate with co-workers.

**Email:** Distribute scanned documents as Email attachments or send them to Internet addresses.

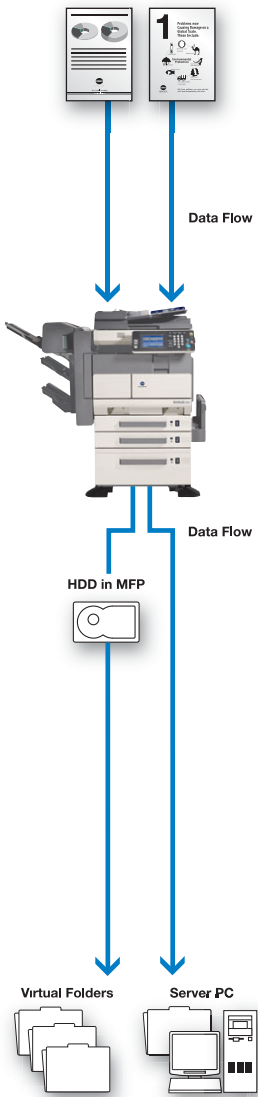
**Fax:** High-volume facsimile traffic can be automatically printed, forwarded, and distributed by Email.

**Print:** Output reports, presentations, booklets, envelopes, even thick paper stock.

**Finish:** Group and sort, staple, 2/3-hole punch, saddle-stitch and crease-fold booklets.



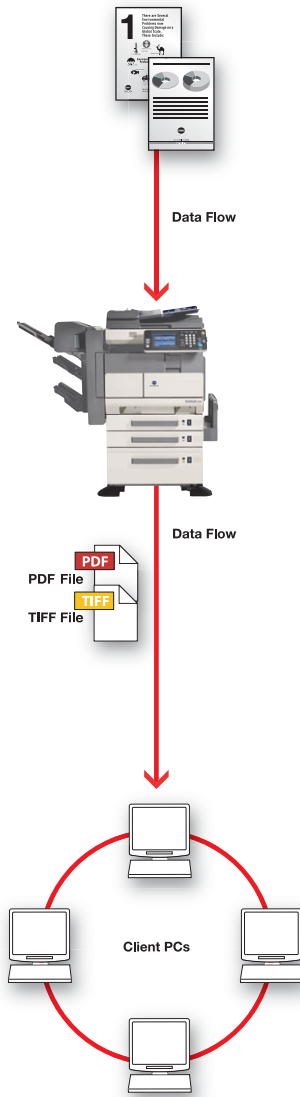
### Scan to FTP, URL or HDD



### Scan to FTP, URL, or HDD.

Why search for paper files in paper folders? Scan them into your server or hard disk drive and send a URL or Email notification. Store them in virtual folders with related documents. And download any project-related information via your standard web browser.

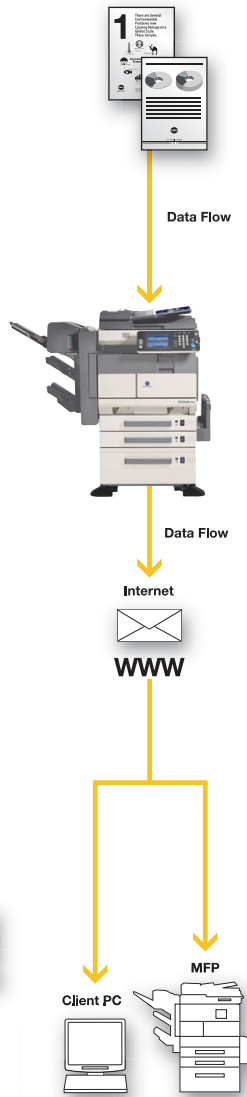
### Scan to SMB



### Scan to SMB for PC retrieval.

You can also scan documents to SMB (Scan-to-Desktop) for desktop distribution, storing files directly to a folder on your PC (with URL notification available). It's fast, convenient and effective – because essential information will be immediately available to network users.

### Scan-to-Email/Internet Faxing



### Save steps by scanning to Email.

In the old way of working, documents came in, copies were made, paper got lost. With Scan-to-Email, you can digitize a document and transform it to PDF or TIFF format – then attach it to an Email message, for transmission to one or more Email addresses.

## Speed the pace of your document output.

Every model in the bizhub 350/250/200 Series gives you the Emperon™ Print System for built-in printing and scanning power, with both PostScript and PCL functionality, point-and-click simplicity, and powerful control over a wide array of finishing options. Duplexing is standard – and you'll also have integrated PageScope software that enables you to manage documents and devices for seamless high-speed workflow. Plus fax option, for high-speed Super G3 transmission and reception with high-volume fax features. Like hundreds of auto-dialing locations, automatic fax forwarding, automatic fax rotation, and dual-line option. Even 11" x 17" fax transmission/reception, to send and receive two-page spreads and ledger-sized originals on a single sheet.

## Make your documents look better than ever.

All bizhub 350/250/200 Series models deliver digital copies and prints with superior image quality. It's all thanks to a revolutionary Konica Minolta innovation:



Simitri® Polymerized Toner, using ultra-fine particles of smaller size and more consistent shape to create sharper text, crisper images and improved halftone reproduction in B&W documents. And even making walk-up copies,

bizhub makes you more productive. One scan, and your original is saved in memory – no need to keep re-scanning to make multiple copies. You can scan copy jobs while printing documents, a huge time-saver on a busy workday. And copy settings can be saved and recalled for later use.

## A secure central hub for input, output and throughput.

The bizhub 350/250/200 series, not only moves your information, it also stores your files. With Scan-to-HDD, you can save documents directly to individual mailboxes with the optional 40 GB Hard Disk Drive. You'll have Password Protection to limit access to mailbox files and future HDD Encryption provides an added security level to your stored HDD data. User Authentication to prevent unauthorized users from accessing the device. SMTP Authentication to ensure that the device is sanctioned to communicate and transmit data via your Email Server. SSL capabilities to give you confidentiality when you transmit information over the Internet. With Account Tracking to help you monitor the use of the device. ISO-15408 Level 3\* Security complies with government and local regulations. You'll even have future Access Check feature that prohibits users entry to the device after three failed attempts and future IP Address Filtering function that identifies which IP Address ranges can or can't access your bizhub 350/250/200.

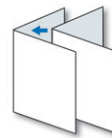


**Increase your in-house print productivity.**

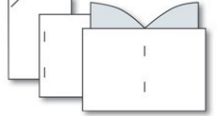
The bizhub 350/250/200 Series lets you produce more documents at greater speed, in-house and on-demand. With modular options, you can automatically sort, group, staple, 2/3-hole punch, saddle-stitch and center-crease booklets. So you can output reports, presentations, training manuals, sales guides, human resource documents and more, in exactly the quantities you need – then revise and reprint whenever your needs change. That means you'll save the expense of storing and discarding obsolete inventories.

**Advanced Sorting**

**Booklet Creation**



2/3 Hole-Punching



Multi-Position Stapling

**Customize a system for your document needs.**

With three models to choose from and a wide array of modular options, the bizhub 350/250/200 Series can be customized to suit your workflow – and optimized to meet specific document demands. So choose your speed. Select your finishing options. Add fax if you need it. And watch bizhub power up your productivity.



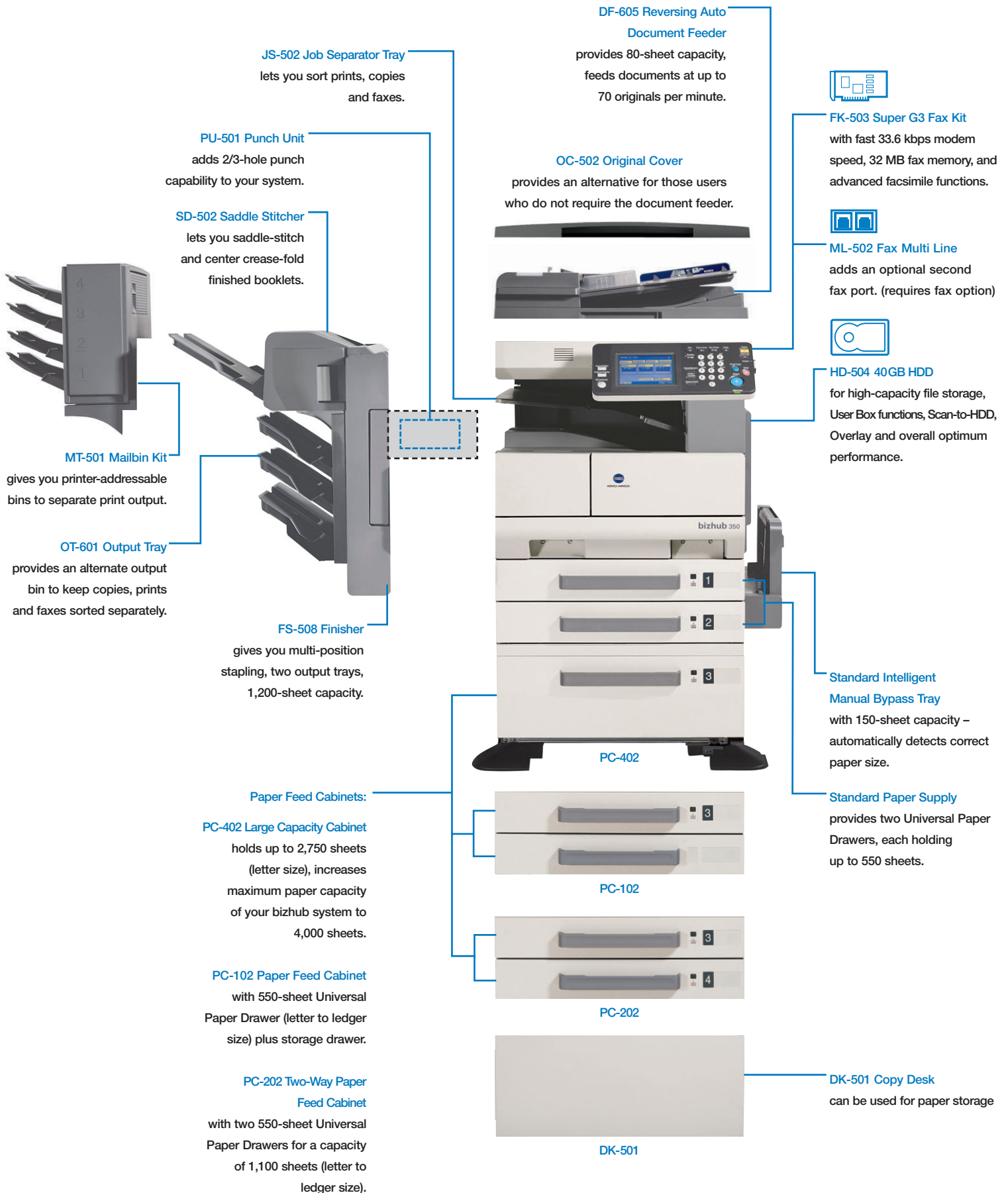
**bizhub 350:**  
 35 ppm  
 print/copy  
 speed, 150,000  
 page monthly  
 duty cycle;  
 shown with  
 options  
 for finishing  
 and  
 saddle-stitching  
 booklets  
 (other options  
 also apply).



**bizhub 250:**  
 25 ppm  
 print/copy  
 speed, 120,000  
 page monthly  
 duty cycle;  
 shown with  
 options  
 for advanced  
 sorting and  
 2/3-hole  
 punching  
 (other  
 options  
 also apply).

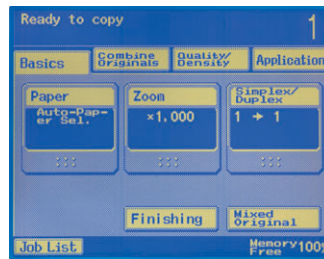


**bizhub 200:**  
 20 ppm  
 print/copy  
 speed,  
 60,000 page  
 monthly duty  
 cycle; shown  
 as base unit  
 (options also  
 apply).



**Tilting panel, on-screen keypad.**

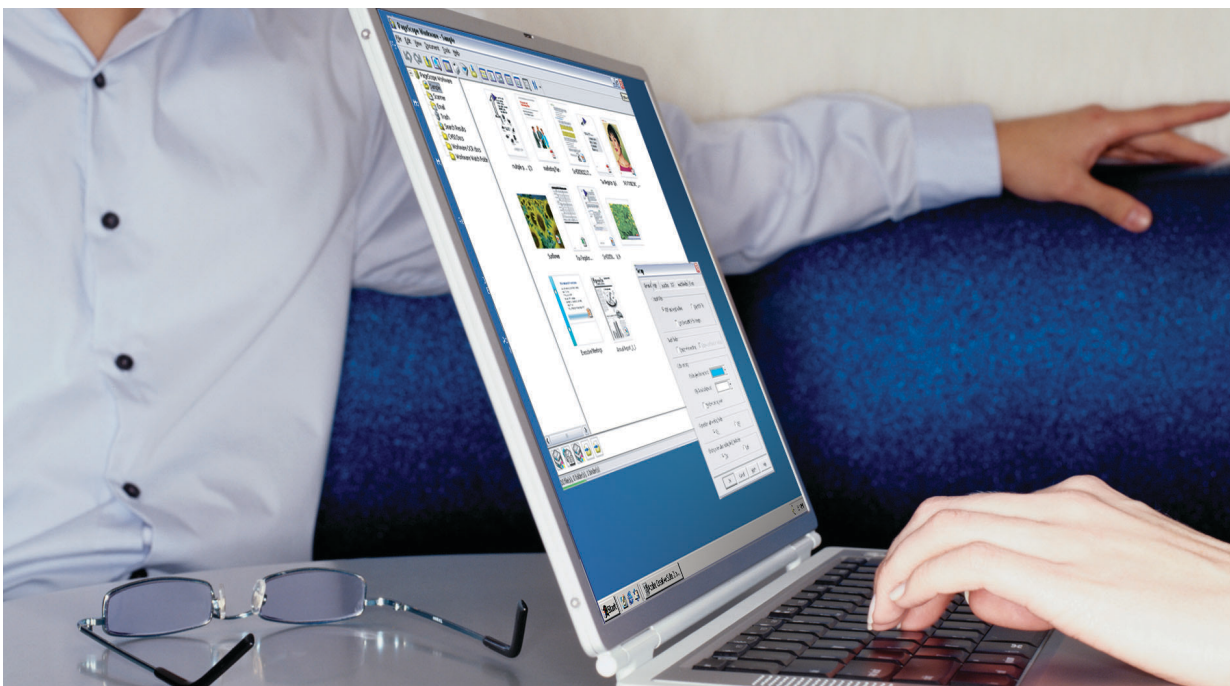
Each model in the bizhub 350/250/200 Series has large keys, simple menus, and a convenient QWERTY on-screen keypad for faster entry of Email addresses and fax data. For Section 508 compliance, every model has a keyboard that tilts in three positions – to allow easy operation from any angle, even wheelchair access.



**Separate display for copy and fax.** When you add the fax option to your bizhub 350/250/200 Series model, you'll have a separate set of on-screen menus to control fax functions – including automatic forwarding, batch transmission, delayed transmission and other high-volume facsimile convenience features. That makes walk-up operation easy.

## Make work flow with the power of PageScope.

The bizhub 350/250/200 Series can do it all – input, output and everything in between. How do you manage all that power? With PageScope software that controls networked devices, merges your bizhub with enterprise systems, manages data and documents, even scans and distributes in a single step.



**PAGESCOPE  
SOFTWARE**



### Control devices right from your desktop.

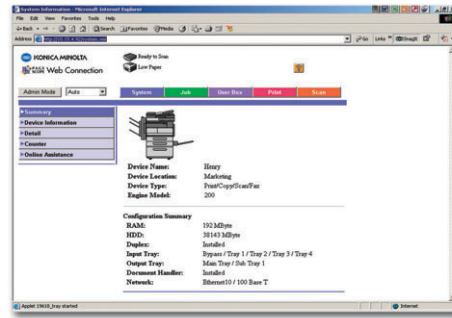
With PageScope working for you, devices and documents can all be managed with speed and efficiency from standard web browsers. Whether you're an end-user or a system administrator, in charge of a single department or a large enterprise installation, PageScope Web Connection lets you easily check the device status, paper supply, toner level, copy count of a single device, and even change settings and perform network configurations. PageScope Net Care lets you manage all your connected MIB-compliant devices without leaving your desk. Even better, you can download total meter counts to an Excel spreadsheet. And PageScope Data Administrator™ lets you manage your devices locally – no need to make adjustments at the control panel of each device. You can import one-touch Email addresses and security data, maintaining uniform settings throughout your network.

### Manage your personal documents more efficiently.

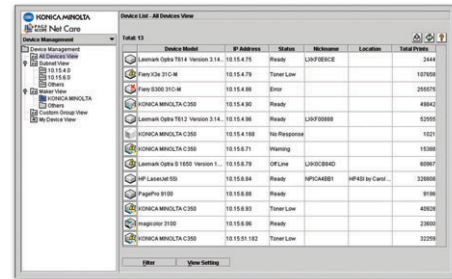
Sharing, storing, searching and retrieving documents can be confusing on any network – but a PageScope option provides new ways to speed the process. PageScope Workware™\* gives you fast, flexible access to scanned documents, lets you view documents as thumbnail images, automatically transform files to PDFs, drag-and-drop to share or print, and search files by filename, date, tags, or a combination of criteria – even perform lite OCR conversion for full-text searches and image editing.

### Save time, cut costs, boost output.

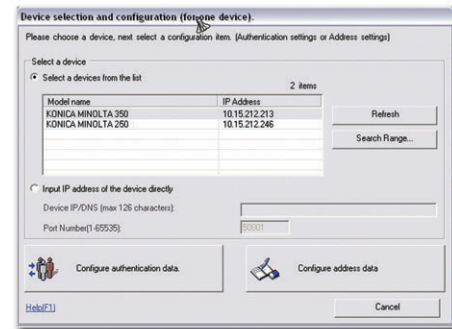
PageScope Router is a valuable software option that automatically routes scanned files to unlimited destinations. You can scan and distribute in a single step, convert file formats, perform document cleanup (despeckle and deskew), all on the fly. The easier it is to manage your documents, data and output devices, the more efficiently your document system can perform – and the more productive your output will be.



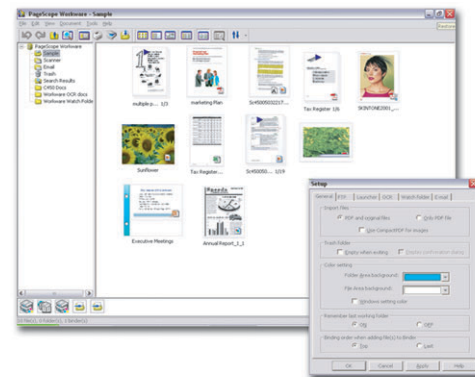
PageScope Web Connection creates a web site for your bizhub device, so you can access status information through standard web browsers.



PageScope Net Care provides one-point management capability for an entire fleet of devices – each identified by its own on-screen icon.



PageScope Data Administrator lets you import and export Email addresses, share User Authentication data and configure Account Tracking.



PageScope Workware\* allows you to transform all file types into true PDFs, preview documents as thumbnail images without opening files – then merge, print and distribute with drag-and-drop speed.

\* May not be available at time of launch.



# bizhub 350/250/200 Series

## General Specifications

**TYPE:**  
Digital Printer/Copier/Scanner/Fax

**IMAGING SYSTEM:**  
Simitri® Polymerized Toner

**SCANNING SYSTEM:**  
CCD Line Sensor

**PRINT/COPY SPEED:**  
350: 35 ppm (letter) 8-1/2" x 11"  
(portrait)  
250: 25 ppm (letter) 8-1/2" x 11"  
(portrait)  
200: 20 ppm (letter) 8-1/2" x 11"  
(portrait)

**MONTHLY DUTY CYCLE:**  
350: 150,000 pages  
250: 120,000 pages  
200: 60,000 pages

**PRINT/COPY RESOLUTION:**  
True 600 x 600 dpi

**HALFTONE REPRODUCTION:**  
256 gradations

**MEMORY:**  
192 MB (32 MB for files, 170 pages)  
(standard)  
40 GB (maximum) (optional)

**WARM-UP TIME:**  
14 seconds (from Sub Power On)  
24 seconds (from Main Power On)

**FIRST COPY:**  
350: 4.8 seconds or less  
250, 200: 5.3 seconds or less

**COPY QUANTITY:**  
1 - 999 copies  
(countdown, interrupt capability)

**MAGNIFICATION:**  
Zoom range: 25 - 400%, 0.1%  
increments  
Preset reduction: 93%, 79%, 73%,  
65%, 50%  
Preset enlargement: 121%, 129%,  
155%, 200%

**EXPOSURE MODES:**  
Auto, Text, Photo, Text/Photo,  
Manual

**ORIGINAL SIZE:**  
Up to 11" x 17" maximum

**PAPER SIZE:**  
5-1/2" x 8-1/2" to 11" x 17"

**PAPER WEIGHT:**  
15 lb. to 24 lb. bond  
Manual bypass:  
24-1/4 lb. to 55-3/4 lb. bond;  
specialty paper (thick paper,  
OHP transparencies, postcards,  
envelopes, label sheets)

**STANDARD PAPER SUPPLY:**  
550-sheet Universal Paper Drawers (2)  
150-sheet Intelligent Bypass

**OPTIONAL PAPER SUPPLY:**  
550-sheet Universal Paper Cabinet  
(1 paper drawer plus storage drawer)  
1,100-sheet Universal Paper Cabinet  
(2 550-sheet drawers)  
2,750-sheet Large Capacity Cabinet

**MAXIMUM PAPER CAPACITY:**  
4,000 sheets (total, with options)

**DOCUMENT FEEDER:**  
DF-605 Reversing Auto Document  
Feeder (optional)  
Capacity: 80 sheets  
Speed: up to 70 scans per minute  
Original size: up to 11" x 17"  
1-sided, 2-sided originals  
Mixed Original Detection

**POWER REQUIREMENTS:**  
120 V, 60 Hz, 11.5 A

**POWER CONSUMPTION:**  
1380 W (max.)

**DIMENSIONS (W x D x H):**  
26-3/4" x 28" x 28-1/4"

**WEIGHT:**  
163 lbs.

**OPTIONS:**  
DF-605 Reversing Auto Document  
Feeder  
DK-501 Copy Desk  
EK-502 Local Interface Kit  
(IEEE Parallel)  
EM-303 32 MB Expanded Memory  
EM-304 64 MB Expanded Memory  
EM-305 128 MB Expanded Memory  
FK-503 Fax Kit  
FS-508 Base Finisher  
HD-504 40 GB Hard Disk Drive  
JS-502 Job Separator Tray  
ML-502 Fax Dual Line  
(requires FK-503)  
MT-501 Mailbin Kit  
OC-502 Original Cover  
OT-601 Output Tray  
PC-102 Universal Paper Feed Cabinet  
(550 sheets, letter to ledger size,  
plus storage drawer)  
PC-202 Universal Two-Way Paper  
Feed Cabinet (1,100 sheets,  
letter to ledger size)  
PC-402 Large Capacity Cabinet  
(2,750 sheets, letter portrait)  
PU-501 Punch Unit  
SD-502 Saddle Stitcher  
SP-501 Stamp Unit  
(requires FK-503)  
Spare TX Marker Stamp 2  
(requires FK-503)

**PAGESCOPE APPLICATIONS:**  
Network & Device Management  
HDD Backup Tool\*  
PageScope Web Connection  
PageScope Net Care  
PageScope Network Setup  
PageScope EMS Plug-Ins  
PageScope NDPS Gateway  
PageScope Data Administrator™  
Document Workflow Management  
PageScope Workware™  
PageScope Router

## Emperon Print System

**TYPE:**  
Embedded

**PROCESSOR:**  
300 MHz

**MEMORY:**  
192 MB (standard)

**NETWORK INTERFACE:**  
RJ45 (Ethernet 10-BaseT/100-BaseTX)  
+ USB 1-1/2.0 Port (standard)  
Parallel (IEEE 1284 compatibility)  
(optional)

**NETWORK PROTOCOLS:**  
TCP/IP, IPX/SPX, SMB, LPD,  
IPP1.1, AppleTalk (EtherTalk),  
LPR, Netware (4.x, 5, 6),  
NDPS, SMTP, POP3, LDAP,  
SSL, SNMP, HTTP 3.0

**SCANNING FUNCTIONS:**  
Scan-to-Email  
Scan-to-FTP  
Scan-to-HDD (with optional HDD)  
Scan-to-SMB (Scan-to-Desktop)  
Scan-to-URL

**PRINT DRIVERS:**  
PCL6:  
Windows 98 SE or Windows ME,  
Windows 2000 (SP4 or later),  
Windows XP (SP2 or later),  
Windows Server 2003,  
Windows NT 4.0 (SP6a)

PS3:  
Windows 98 SE or Windows ME  
(PPD file),  
Windows 2000,  
Windows XP (SP2 or later),  
Windows Server 2003,  
Windows NT 4.0 (SP6a),  
Mac OS 9.2 (PPD file),  
Mac OS X 10.2 or 10.3

## FK-503 Fax Option Specifications

**COMMUNICATION LINE:**  
Public Switched Telephone Network  
(PSTN)

**COMPATIBILITY:**  
G3, Super G3

**DATA COMPRESSION:**  
MH, MR, MMR, JBIG

**MODEM SPEED:**  
33.6 kbps (max; auto fallback)

**TRANSMISSION SPEED:**  
Less than 3 seconds per page\*

**SCANNING SPEED:**  
Up to 70 sheets per minute  
(with DF-605 Reversing Auto  
Document Feeder option)

**FAX RESOLUTION:**  
200 x 100 dpi  
200 x 200 dpi  
400 x 400 dpi  
Text Photo (200 x 200 dpi)  
Grayscale (200 x 200 dpi)  
Super Grayscale (400 x 400 dpi)

## FK-503 Fax Options Continued

**MEMORY:**  
32 MB

**FAX TRANSMISSION/RECEPTION SIZE:**  
Up to 11" x 17"

**DIALING:**  
540 one-touch dialing locations

**BROADCAST:**  
300 destinations

**OTHER FACSIMILE FUNCTIONS:**  
IP Relay Fax  
PC Faxing

## Available Print/Copy Functions\*

Account Track (up to 1,000 accounts)  
APS/AMS  
Auto Duplex, Stackless  
Auto/Manual/Photo Exposure  
Auto Tray Switching  
Black-White Reverse  
Book Copy  
Book Erase  
Booklet Function  
Box Function (Copier, Reprint with  
setting mode change, Resend)  
Combined Copy Setting  
(2-in-1, 4-in-1)  
Copy Job Reserve (queue)  
(5 jobs)  
Copy Programs (Mode Memory)  
(10 jobs)  
Cover Mode  
Criss/Cross Sorting  
Distribution Number and Stamping  
Energy Save Mode  
Erase (Edge/Frame)  
File Margin  
Hole-Punching (2/3 hole)  
Horizontal/Vertical Zoom Ratios  
(X/Y magnification)  
Image Overlay  
Image Repeat  
Image Rotation  
Interrupt Mode  
Mixed Original Detection  
OHP Interleave  
Page Insertion  
Proof Copy  
Separate Scanning  
Sleep Mode Recovery  
Stapling (single, multi-position, center)  
Text, Photo, Text/Photo,  
Dot Matrix Modes  
Zoom



© 2005 KONICA MINOLTA BUSINESS SOLUTIONS U.S.A., INC. All rights reserved. Reproduction in whole or in part without written permission is prohibited. Konica Minolta and The essentials of imaging are trademarks of KONICA MINOLTA HOLDINGS, INC. bizhub, Emperon, PageScope, Workware, and Data Administrator are trademarks of KONICA MINOLTA BUSINESS TECHNOLOGIES, INC. Simitri is a registered trademark of KONICA MINOLTA BUSINESS SOLUTIONS. All other brands and product names are registered trademarks or trademarks of their respective owners.

Design & specifications subject to change without notice.

\*Some functions may require options, which may or may not be available at time of launch.

# bizhub 350/250/200



KONICA MINOLTA

KONICA MINOLTA  
BUSINESS SOLUTIONS U.S.A., INC.  
100 Williams Drive  
Ramsey, NJ 07446

[www.kmbs.konicaminolta.us](http://www.kmbs.konicaminolta.us)  
[www.kmbs.konicaminolta.us/solutions](http://www.kmbs.konicaminolta.us/solutions)

Item #: 350SERIESBRO  
09/05